

Raika Petro–Equip

Supplier of Facilities of Oil, Gas, Petrochemical
as well as Food and Pharmaceutical Industries





Raika

| | Flange |
|-----------------|-----------------|
| Type | Gate Valve |
| | Global Valve |
| | Ball Valve |
| | Butterfly Valve |
| | Plug Valve |
| | Check Valve |
| | Safety Valve |
| | Control Valve |
| | Relief Valve |
| | Diaphragm Valve |
| | Strainer |
| | Steam trap |
| | Size(in) |
| Material | Carbon Steel |
| | Stainless Steel |
| | Alloy Steel |
| | Cast iron |
| | Bronze |
| | Brass |
| | Duplex |
| Pressure Rating | Class 150 lbs |
| | 5000 lbs |
| Standard | ANSI/ASME |
| | API |
| | BS |
| | SIN |
| | EM |
| | Body:WCB |
| | WC1 |
| | WC6 |
| | LCB |
| | LC3 |
| | C5 |
| | CF8 |
| | CF8M |
| | CF3 |
| | CF3M |
| | CF8C |
| | 304 |
| | 316 |
| 316L | |
| 321 | |
| F-51 | |
| Operation | Hand Wheel |
| | Pneumatic |
| | Electric |
| | Hydraulic |
| Connection | Flangend |
| | Threaded |
| | Socket weld |
| | Butt weld |





Raika

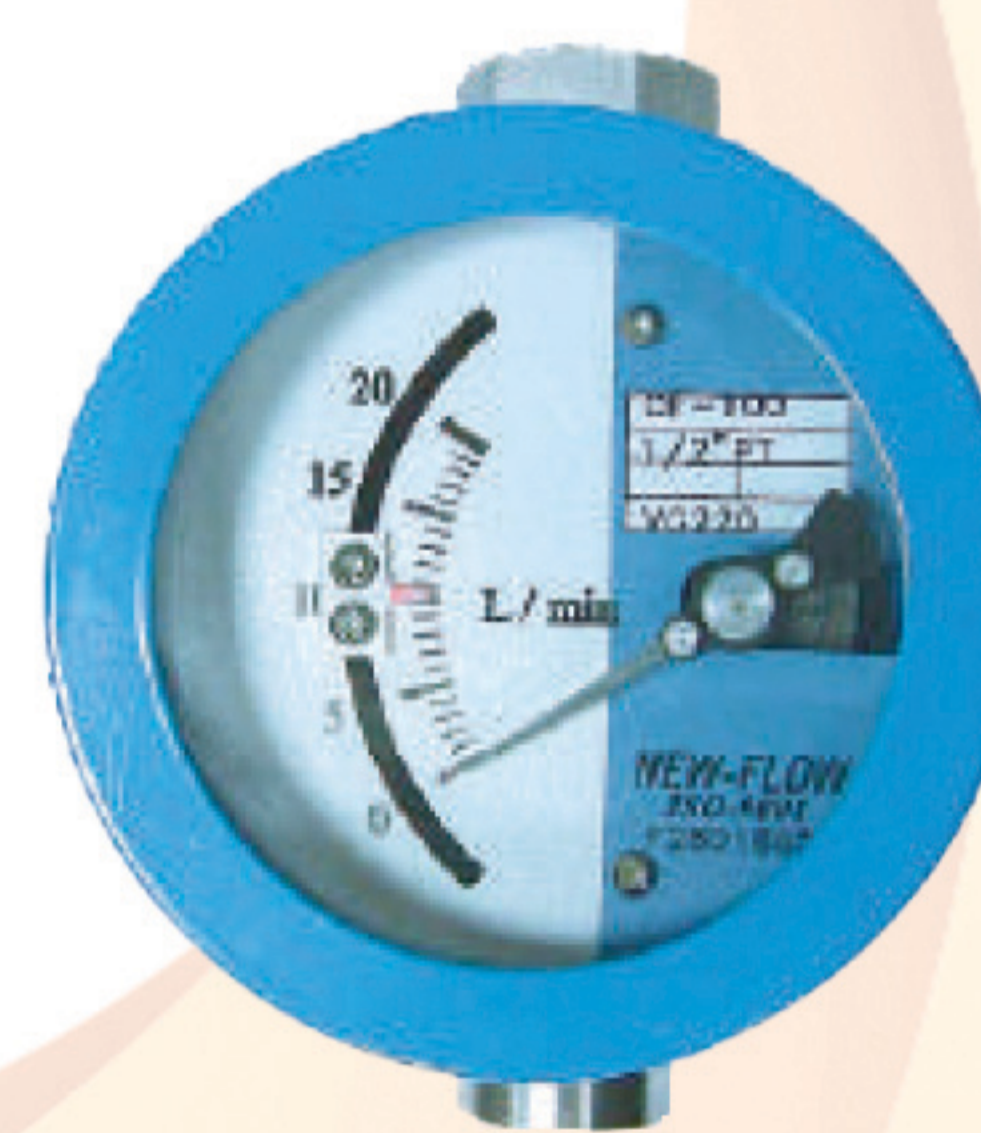


| Flange | | |
|----------------------|---------------------------------|--------------------------|
| Type | Welding Neck (WN), Slip On (SO) | |
| | Slip On (SO) | |
| | Socket Welding (SW) | |
| | Blind (BL) | |
| | Lap Joint (LJ) | |
| | Screwed Flange (SF) | |
| | Plate Flange (PF) | |
| | WN, SW, BL, LJ | |
| Size(in) | 1/2" - 72" | |
| | SF , PF | |
| | 1/2" -12" | |
| Pressure Rating | Class 150 lbs to 6000 lbs | |
| Material | Carbon Steel (CS) | |
| | Stainless Steel (CS) | |
| | Low & High Alloy Steel (AS) | |
| Standard | ASTM A 105 , A105N | |
| | ASTM A 182 Gr. F304, F316 | |
| | ASTM A350 Gr. F11, F12 | |
| Dimension | ASME B16.5 | |
| Fitting | | |
| Type | Elbow 90 Long Radius (LR) | |
| | Elbow 90 Short Radius (SR) | |
| | Elbow 45 Long Radius (LR) | |
| | Elbow 45 Short Radius (LR) | |
| | Tee Equal | |
| | Tee Reducing | |
| | Cross Equal | |
| | Cross Reducing | |
| | Reducer Con. | |
| | Reducer Ecc. | |
| | Lap Joint Stub Ends | |
| | Caps | |
| | Union | |
| | Coupling | |
| | Hex Nipple | |
| | Size(in) | 1/2" - 48" |
| | | Thickness |
| | Pressure Rating | Class 150 lbs - 6000 lbs |
| | Material | High Pressure |
| | | Carbon Steel (Cs) |
| Stainless Steel (SS) | | |
| Standard | Low & High Alloy Steel (AS) | |
| | ASTM A234 Gr WPB | |
| | ASTM A182 Gr F304 | |
| | F316 | |
| | F316L | |
| | ANSI B16.9 | |
| | B16.28 | |
| Ends | Screwed | |
| | Socket Weld | |
| | Butt Weld | |



Raika

| Pipe & Tube | |
|-----------------------------|---|
| Type | Seamless Pipe & Tube (SMLS) |
| | Electric Resistance Welding Pipe (ERW) |
| | Large Diameter Arc Welding Pipe (SAW) |
| | Spiral Welded Pipe (SSAW) |
| | Butt Welded Pipe (BW) |
| | Galvanized Pipe (GALV) |
| | Coating Pipe |
| | Line Pipe |
| | Boiler & Heat Exchanger Tubes |
| Size: | SMLS 1/8" – 30" |
| | ERW 2" - 48" |
| | SAW 16" – 72" |
| | SSAW 16" – 120" |
| | BW 1/8" – 12" |
| | GALV 1/8" – 12" |
| | BOILER 1/8" – 5" |
| Schedules: | SCH10 to SCH160-std-x-xs-xxs-5l |
| Standard | API 5L Gr B, X42, X52, X60, X65 |
| | ASTM A53 / A106 Gr B |
| | ASTM A333 Gr 6 |
| | ASTM A 213, A249, A179 |
| Stainless Steel Pipe & Tube | |
| Type | Seamless Stainless Steel Tube & Pipe (SMLS) |
| | Welded Stainless Steel Pipe |
| | High Pressure Pipe |
| Size: | SMLS 1/8" – 30" |
| | ERW 1/8" – 40" |
| | HIGH PR. 1/8" – 6" |
| Schedules: | SCH5S – SCH80S |
| Standard | ASTM A312, A269 TP304L, 316L |
| Alloy Pipe | |
| Type | High Alloy Seamless Tube & Pipe |
| Size: | 1/8" – 24" |
| Schedules: | SCH10 – SCH160 |
| Standard | High Alloy Seamless Tube & Pipe |
| Instrumentation | |
| | Pressure & Diff. Pressure Transmitter |
| | Pressure & Diff. Pressure Gauge |
| | Pressure & Diff. Pressure Switch |
| | Flow Meter |
| | Flow Switch |
| | Flow Indicator |
| | Temperature Transmitter |
| | Temperature Sensor (Thermocouple) |
| | Temperature Switch |
| | Temperature Gauge |
| | Level Indicator |
| | Level Meter |
| | Level Gauge |
| | Level Switch |



Raika Petro – Equip



021-26232088



021-26232088



PT-RAYKA.ir



PT-RAYKA.com



INFO@PT-RAYKA.com